

# TESLA

## **Cook BBQ100** Wireless Meat Thermometer



### **User manual ENG**

[www.tesla-electronics.eu](http://www.tesla-electronics.eu)



Dear customer,

thank you for purchasing a proven TESLA brand product. Please read this manual carefully before using for the first time. He will be a good guide for you when getting to know your new device. We wish Box TESLA to be a pleasant companion for you. The data and tips used in this manual may be subject to future changes and improvements and are valid for the release of its first version, as of Jul 2022.

Thank you for your understanding.

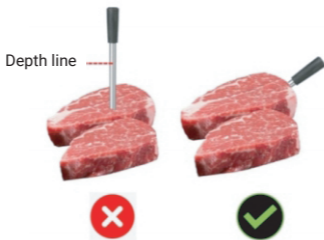
# FEATURES AND NOTICES



- Bluetooth version: 5.2
- Waterproof of probe: IP67
- Range up to: 50 meters
- Charging time: 20 minutes
- Working time: 36 hours
- The application can support up to 6 probes working simultaneously
- Oven temperature: Do not exceed 300 °C

## NOTICE

Insert the probe into the meat so that it does not exceed the depth line. You cannot put the probe in the oven by itself, otherwise it will be damaged by the high temperature.



# FEATURES AND NOTICES

The Bluetooth signal is affected by the cover, in a closed environment (closed cover) the range is up to 10 m. When the cover is open, the range is about 50 m.



Do not insert into microwave.



Do not wrap the probe in aluminum foil.



The probe will be very hot during or just after cooking.

**DO NOT touch with bare hands.**



Do not expose the probe to a temperature greater than 300 °C.



# MOBILE APPLICATION

The distance of the probe is influenced by the grilling equipment.



## DOWNLOAD THE APP

Thanks to the mobile application, you are completely in control. Preset modes help you achieve the perfect result. You can see all important data such as temperature, baking time, history, etc.



# HOW TO USE

## IT'S EASY

Allow the probe to charge for 20 minutes before each use. This guarantees up to 36 hours of use. Insert the probe into the meat up to the depth line. Set the usage type in the app. Once the set values are reached, the application will notify you.



## NOTICE

If the red light is on, the probe is charging. The green color indicates that the probe is charged and you can start using it. You can check the battery status in the mobile application. If the probe is charging, the Bluetooth connection is interrupted. Once you disconnect the probe from the charging case, it will automatically connect itself (you must have an active Bluetooth connection in your phone).

# HOW TO USE

Turn on the Bluetooth of your mobile phone (iOS system).  
For Android, Bluetooth and location services must be turned on at the same time.

## ← Bluetooth

Bluetooth

Currently visible to nearby devices



## ← Location services



Access my location



Location Services requires **Internet** access, the **Storage** and **Location permissions**, and needs to use **WLAN** and **Bluetooth**. Location information will be provided to system services to update the time zone. By enabling this feature, you agree to these terms and the [Statement About Location Services and Privacy](#).

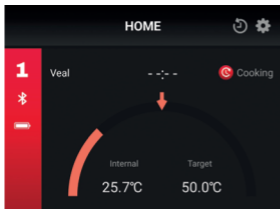
Remove the probe from the charging case, launch the mobile app and the probe will connect automatically.



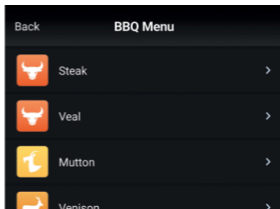
**Aicooking**

# HOW TO USE

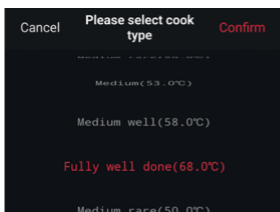
## GUIDED COOK SYSTEM



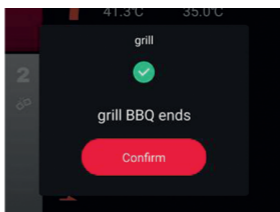
1. Select "Select menu"



2. Select the type of meat



3. Select the desired type doneness/temperature

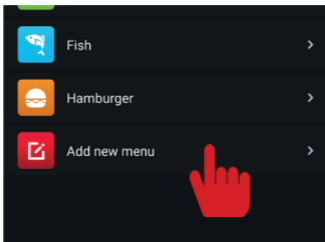


4. Done. Application you alerts as soon as the required values are reached



# HOW TO USE

## HOW TO CUSTOMIZED TARGET THE TEMPERATURE

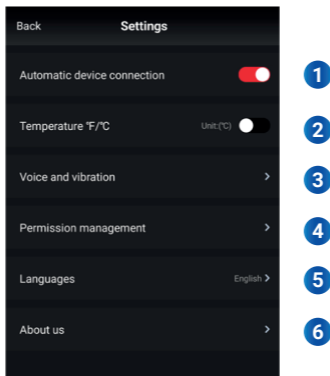


Select "Add new"



Choose a new name for your menu and select the desired temperature.

## SETTINGS



- 1) Automatic device connection
- 2) Temperature units (°C / °F)
- 3) Turn on/off the voice and vibration
- 4) Set up the permission of bluetooth and location
- 5) Select the languages
- 6) About us

# WARRANTY

---

Serial number

---

Date of sale

---

Seller's stamp and signature

## 1. Warranty period

The manufacturer provides a warranty for this product for a period of 24 months from the date of purchase by the consumer. The warranty period is extended by the time during which the product was under warranty repair, or could not be used during the warranty period, or if the nature of the defect prevented its use. The warranty only applies to defects caused by manufacturing errors or material defects!

## 2. Warranty card

Free warranty service is only provided if proof of purchase of the product (receipt) and a correctly completed warranty form is presented – it must contain the serial number, date of sale and stamp of the store (assembly company). Copies and incorrectly completed warranty forms will not be considered!

## 3. Repairs during the warranty and post-warranty period

Warranty service must be claimed at the organization where the product was purchased or at the assembly company that performed the installation.

# WARRANTY

## 4. Scope of warranty

The warranty is void if the defect is caused by mechanical damage (except for damage during transport), improper use, carelessness, unavoidable event (natural disaster), if the product was connected to a different supply voltage as stated in the technical specification, and also in case of modifications or repairs performed outside the distributor's service. The warranty also cannot be applied if the consumer requires modification or adaptation to extend the functions of the product (or a system made up of several components) compared to the standard design.

## 5. Declaration of conformity

You can find it at [www.tesla-electronics.eu](http://www.tesla-electronics.eu)

## Record of warranty repairs

---

Date of notification

---

Execution date

---

No. mont. sheet/comment

---

Signature

**Výrobce / Dovozce / Manufacturer:**  
INTER-SAT LTD., Blucina 704, 664 56, Czech Republic